

VISITOR CENTRE PROJECT NEWSLETTER

November/December 2017

Hello and welcome to the Christmas issue of our Sherwood project newsletter. We'd like to take this opportunity to wish you a very merry Christmas, and a happy and healthy new year!

If you'd like further details on any of the subjects covered, or want more information about our project, please get in touch with the project communications manager, Helen Moffat – helen.moffat@rspb.org.uk

IN THE FRAME

If you've been past site in the last few weeks, you'll have seen a huge difference!

There's been fantastic progress since October's foundation-laying event. The beginning of work on site was really exciting, but it's moved to another scale now that the wooden frame is being built.

The glulam frame arrived in late November, and our contractors began craning the large timber poles into place. The framework has been completed, and we've reached another huge milestone as work begins on preparing to put the roof on! The purlins are being fixed

in place, which will support this huge rolling structure – a striking feature of the building - and we expect to turn the heads of anyone walking past site early in the new year!



Cared for and protected by



Working with



In partnership with



In association with



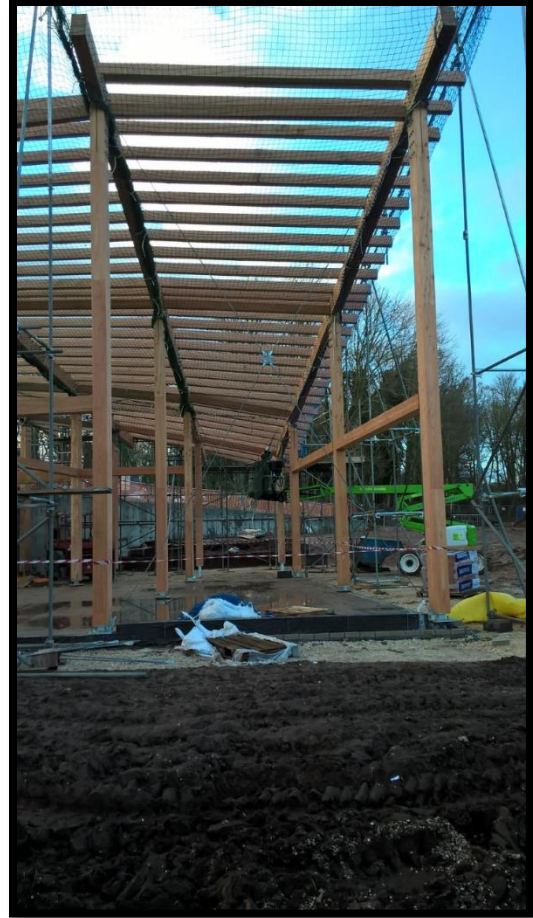
Next year is obviously a hugely exciting one for the project – each month will bring a new development, and take us that step closer to opening!

We look forward to telling you about them – and welcoming you to the visitor centre in no time at all!



IN THE MEANTIME, HAVE A SAFE AND ENJOYABLE FESTIVE SEASON!

BEST WISHES FROM THE SHERWOOD PROJECT TEAM.



Cared for and protected by



Working with



In partnership with



In association with

